



# OCTOPUS

Digital Signage Management Platform

---

# Managing Multiple Screens Is Complex



## Different Brands

Hardware from various manufacturers makes integration and standardized management difficult and fragmented.



## Scattered Control Systems

Operating multiple disconnected platforms for content and device management leads to inefficiency and errors.



## Time-Consuming Updates

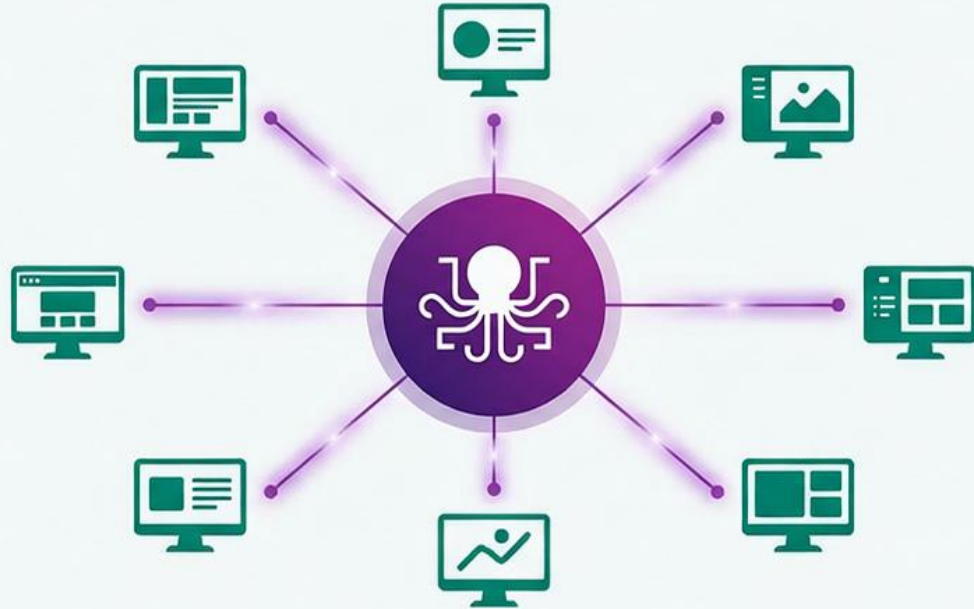
Manual updates across numerous devices consume valuable resources and increase downtime risks.



## Lack of Visibility

Real-time monitoring and analytics for screen performance, health, and content delivery are often unavailable or limited.

# Meet Octopus



One Platform. All Your Screens.

# Key Features



## Multi-Brand Support

Connect and manage various device brands and models in one unified platform.



## Centralized Control

Gain complete oversight and control of your entire network from a single, intuitive interface.



## Real-Time Updates

Receive instant notifications and data updates to stay informed about device status and performance.



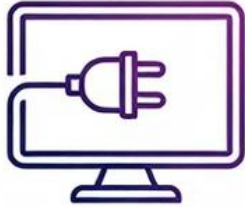
## Analytics & Insights

Leverage data-driven insights to optimize operations, identify trends, and make informed decisions.

# How It Works



1



## Connect Your Screens

Inter SemiBold 28pt

Connect your screens to our platform with ease using our secure hardware or software solutions.

2



## Manage From Dashboard

Inter SemiBold 28pt

Access a centralized dashboard to organize, schedule, and control content across all your displays from anywhere.

3



## Deploy Content Instantly

Inter SemiBold 28pt

Publish your content with a single click. Updates appear on your screens instantly, keeping your audience engaged.



# Why Choose Octopus?



## Save time with centralized management

Streamline content delivery from a single platform.



## Scalable across any number of screens

Effortlessly expand your network from one to thousands.



## Easy integration with existing hardware

Compatible with your current players and displays.



## Works with any brand of digital signage

Supports a wide range of devices and operating systems.



# Use Cases



## Retail Chains

Monitor customer flow, optimize staff scheduling, and enhance security across multiple store locations effectively.



## Corporate Offices

Manage visitor access, secure sensitive areas, and improve operational efficiency in large corporate buildings.



## Restaurants

Streamline order processing, manage reservations, and ensure compliance with health and safety standards.



## Healthcare Facilities

Secure patient records, manage medical assets, and monitor patient well-being in hospitals and clinics.

# Pricing Plans



## Starter

**\$29/month**

- ✓ Basic Features
- ✓ 5 Users
- ✓ 10GB Storage
- ✓ Email Support

Get Started

Most Popular

## Professional

**\$79/month**

- ✓ All Starter Features
- ✓ Advanced Analytics
- ✓ Unlimited Users
- ✓ 50GB Storage
- ✓ Priority Support

Get Started

## Enterprise

**Custom Pricing**

- ✓ All Professional Features
- ✓ Dedicated Account Manager
- ✓ Custom Integrations
- ✓ Unlimited Storage
- ✓ 24/7 Phone & Chat Support

Get Started

# Customer Success



*"Since adopting this platform, our customer satisfaction scores have improved by 30%. The support team is incredibly responsive and knowledgeable."*

— Sarah Johnson, VP of Customer Success,  
TechSolutions Inc.



*"A game-changer for our retention strategies. The insights provided are invaluable, and the onboarding process was seamless."*

— David Chen, Director of Operations, InnovateNow

## Trusted By






# Ready to Simplify Your Digital Signage?

Join hundreds of businesses managing their  
screens with Octopus

[Get Started Today](#)

 [support@octopus.com](mailto:support@octopus.com)

 +1 800-123-4567

 [www.octopus.com](http://www.octopus.com)

